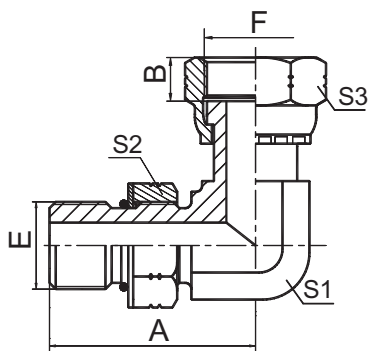


过渡接头 ADAPTER



2OF9-OG

90° 弯美制 SAE 外螺纹带
 O 形圈重系列 ISO 11926-2 / ORFS 内螺纹
 90° ELBOW SAE O-RING BOSS S-SERIES
 ISO 11926-2 / ORFS FEMALE

代号 PART NO.	螺纹 THREAD		O 形圈 O-RING		尺寸 DIMENSIONS				
	E	F	E 端		A	B	S1	S2	S3
2OF9-04OG	7/16"X20	9/16"X18	O904		30.5	8.5	14	19	19
2OF9-06OG	9/16"X18	11/16"X16	O906		34.5	10	16	22	22
2OF9-08OG	3/4"X16	13/16"X16	O908		37.5	11	19	27	27
2OF9-10OG	7/8"X14	1"X14	O910		45.2	13.5	22	30	30
2OF9-12OG	1.1/16"X12	1.3/16"X12	O912		52	15	27	36	36
2OF9-16OG	1.5/16"X12	1.7/16"X12	O916		56	15	33	41	41
2OF9-20OG	1.5/8"X12	1.11/16"X12	O920		59	15	41	50	50
2OF9-24OG	1.7/8"X12	2"X12	O924		63	16	48	55	60

注：E 端与 ISO 11926-1 油口相配。 Note: E end is connected with ISO 11926-1port.